



Garage Central

Chausée de Bruxelles 67 · 7090 Braine-le-Comte · Belgium

NPP Code: N-DE-M-7603

Single brand: No

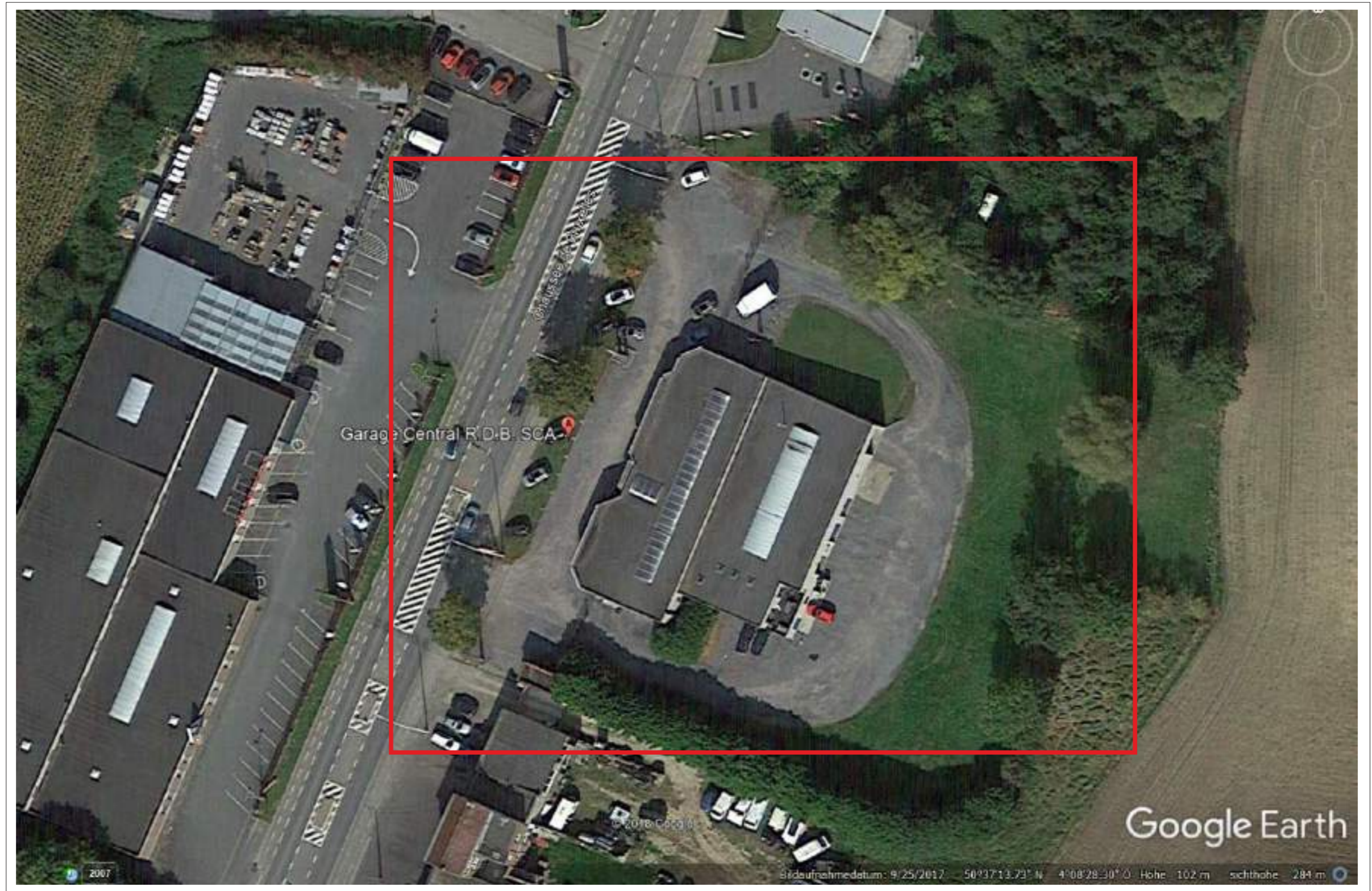
VI size: 4 for Red Tablet with open hangover / Back Panel

VI size adaptation needed: No

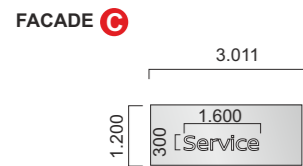
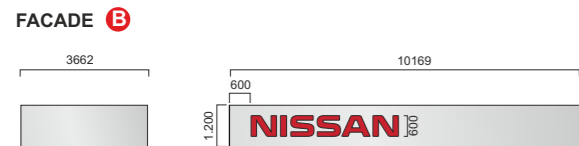
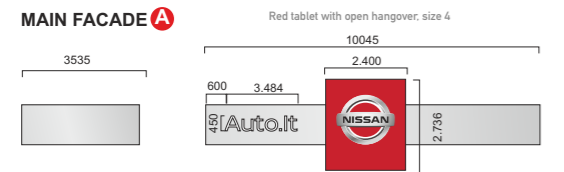
Reason for adaptation: -

SITE PLAN

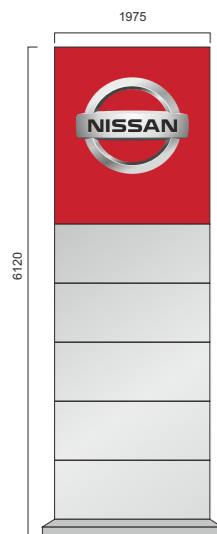
external visual identity



SITE PLAN-DETAIL



D Pylon 1.975 x 6.120 mm



E Directional sign 1.200 x 790 mm



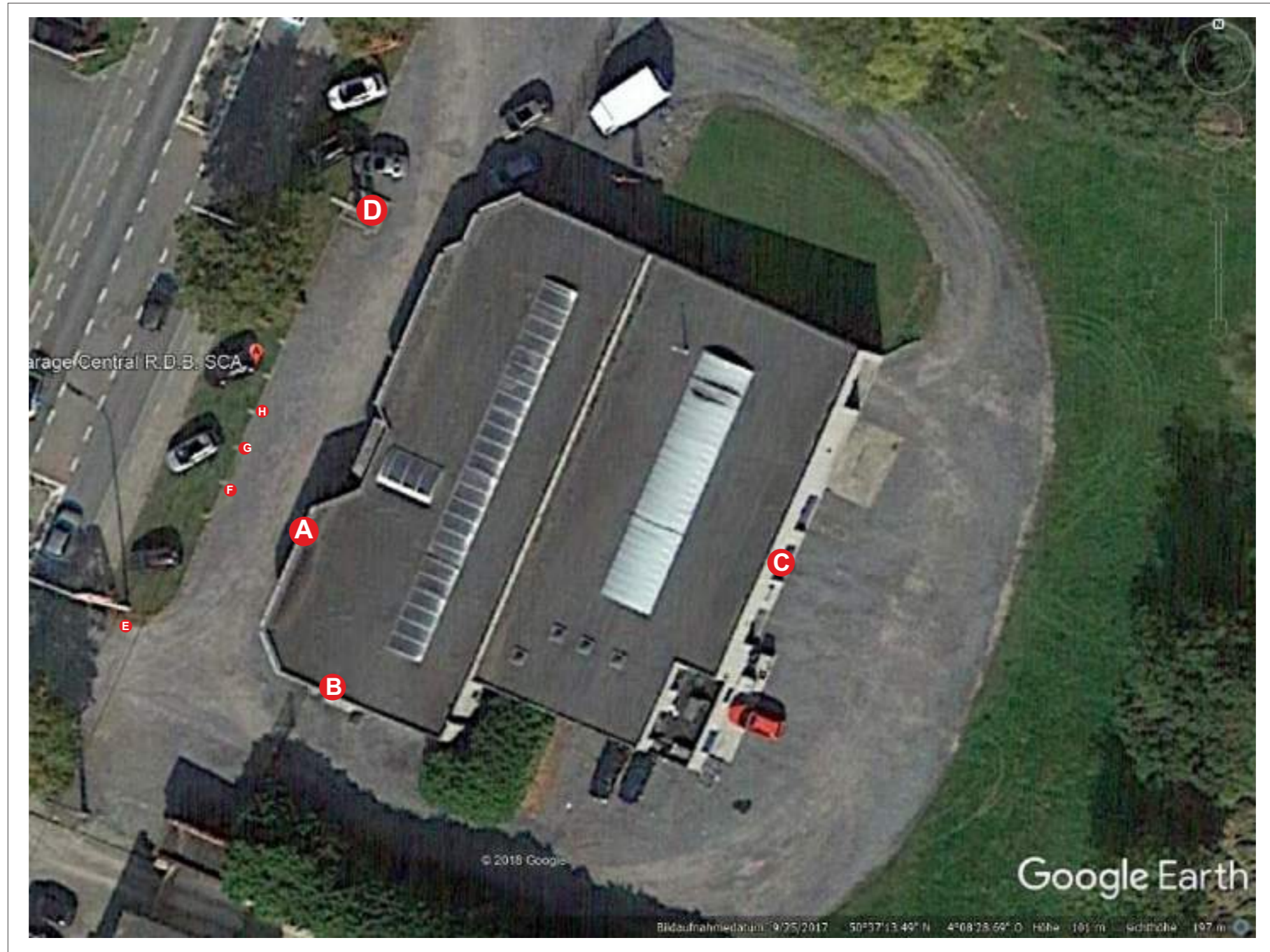
F External display „electric vehicles“ 2.100 x 440 mm



G External display „commercial vehicles“ 2.100 x 440 mm



H External display „intelligent choice“ 2.100 x 440 mm



Elevation A

external visual identity



BEFORE



Elevation A

external visual identity



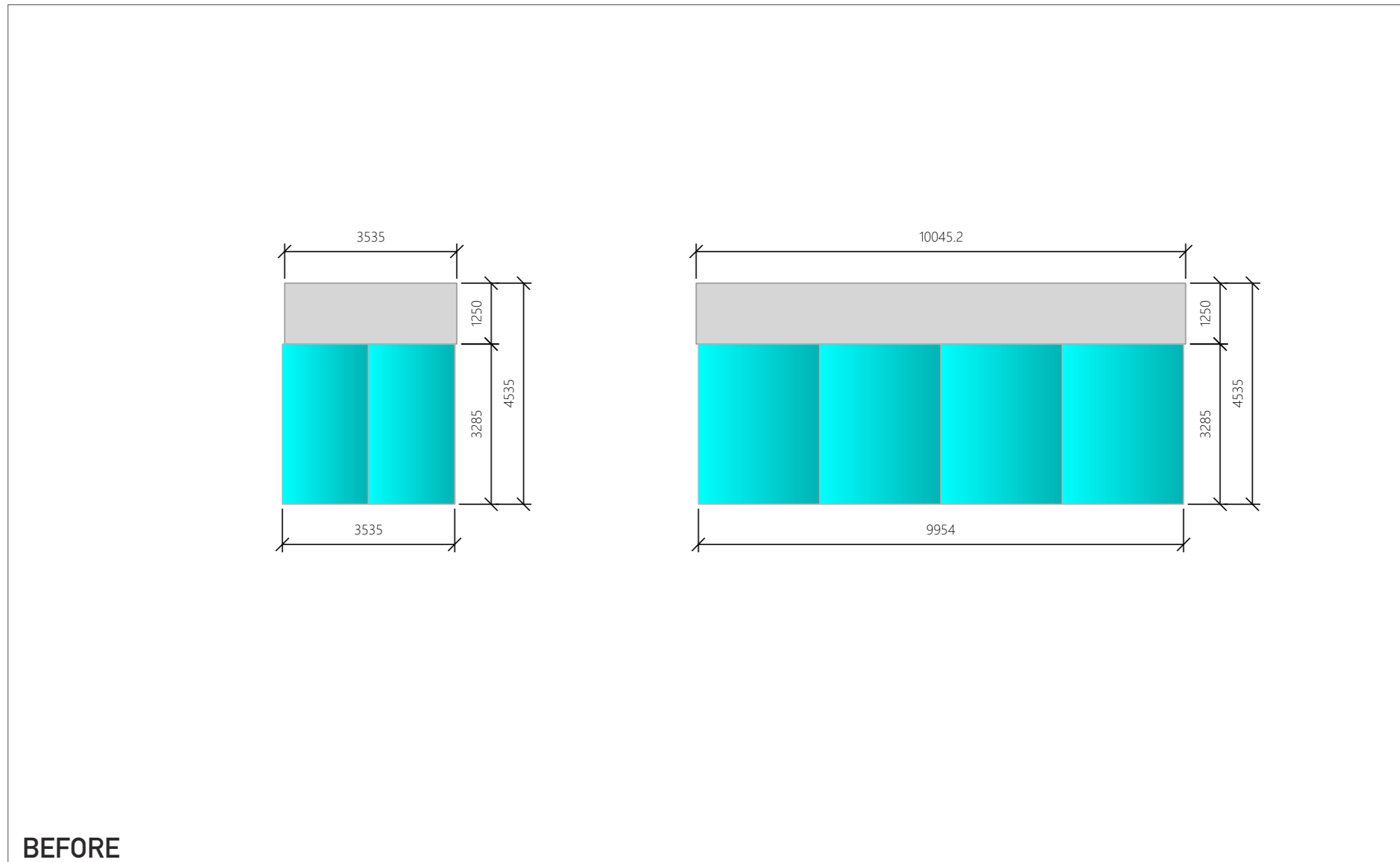
AFTER

Photo Renderings may not be exactly to scale, they have the purpose to give a better impression of the proposed treatment. Care has been taken to ensure they are as close as possible but may not represent the final installed proportions.



Elevation A

external visual identity

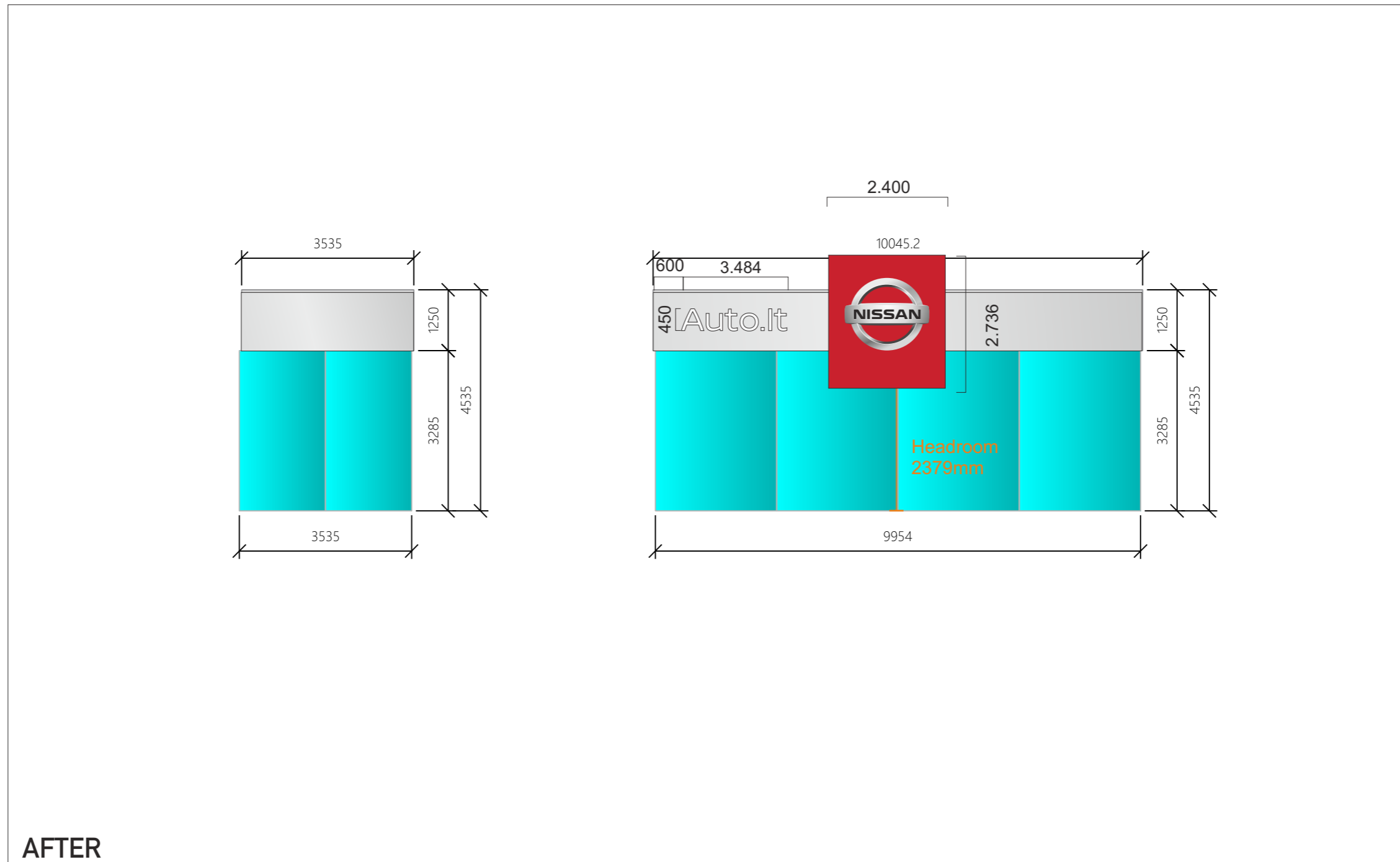


BEFORE



Elevation A

external visual identity



AFTER



Elevation B

external visual identity



BEFORE



Elevation B

external visual identity



AFTER

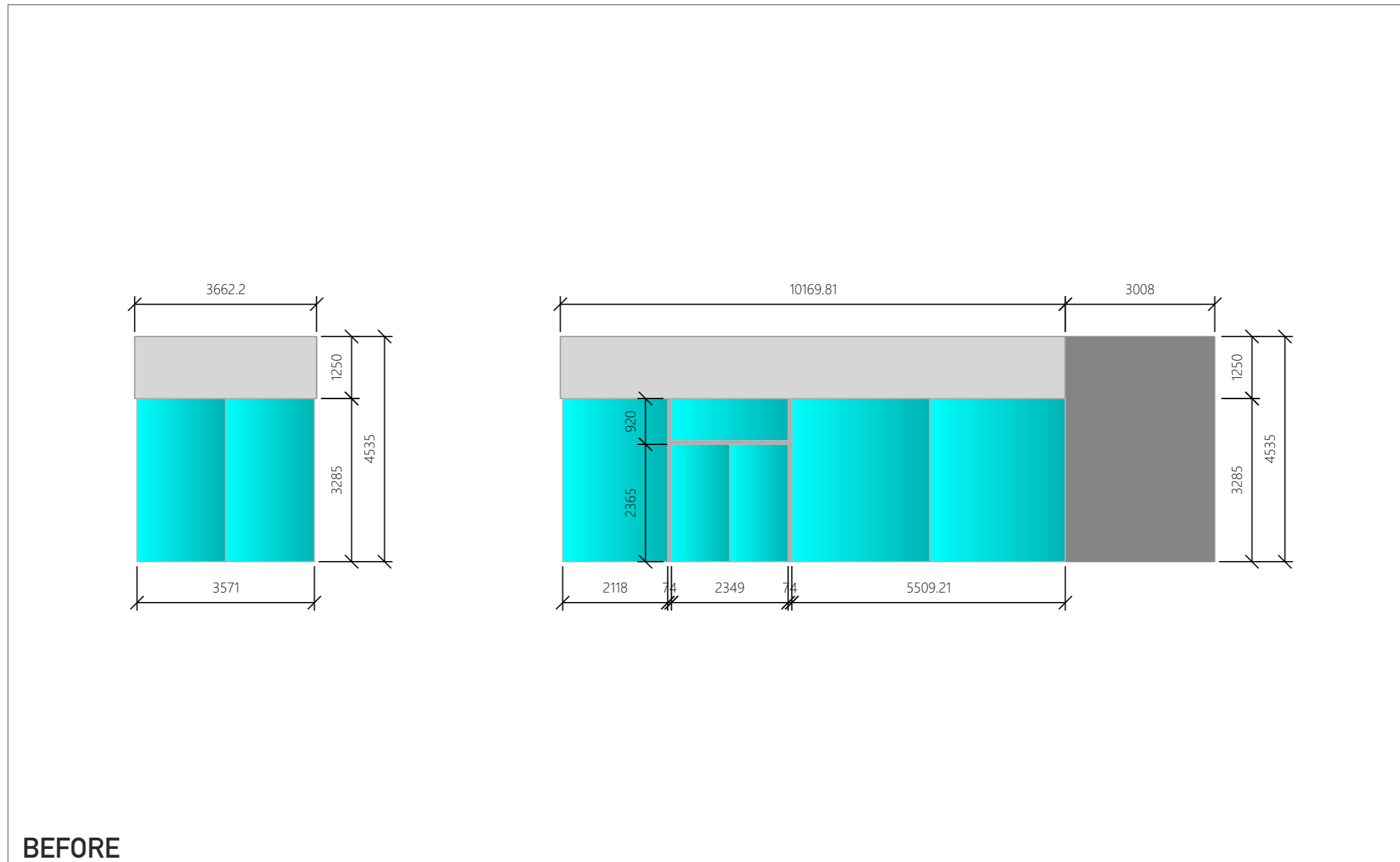
Photo Renderings may not be exactly to scale. they have the purpose to give a better impression of the proposed treatment. Care has been taken to ensure they are as close as possible but may not represent the final installed proportions.

painted by dealer
RAL 7016



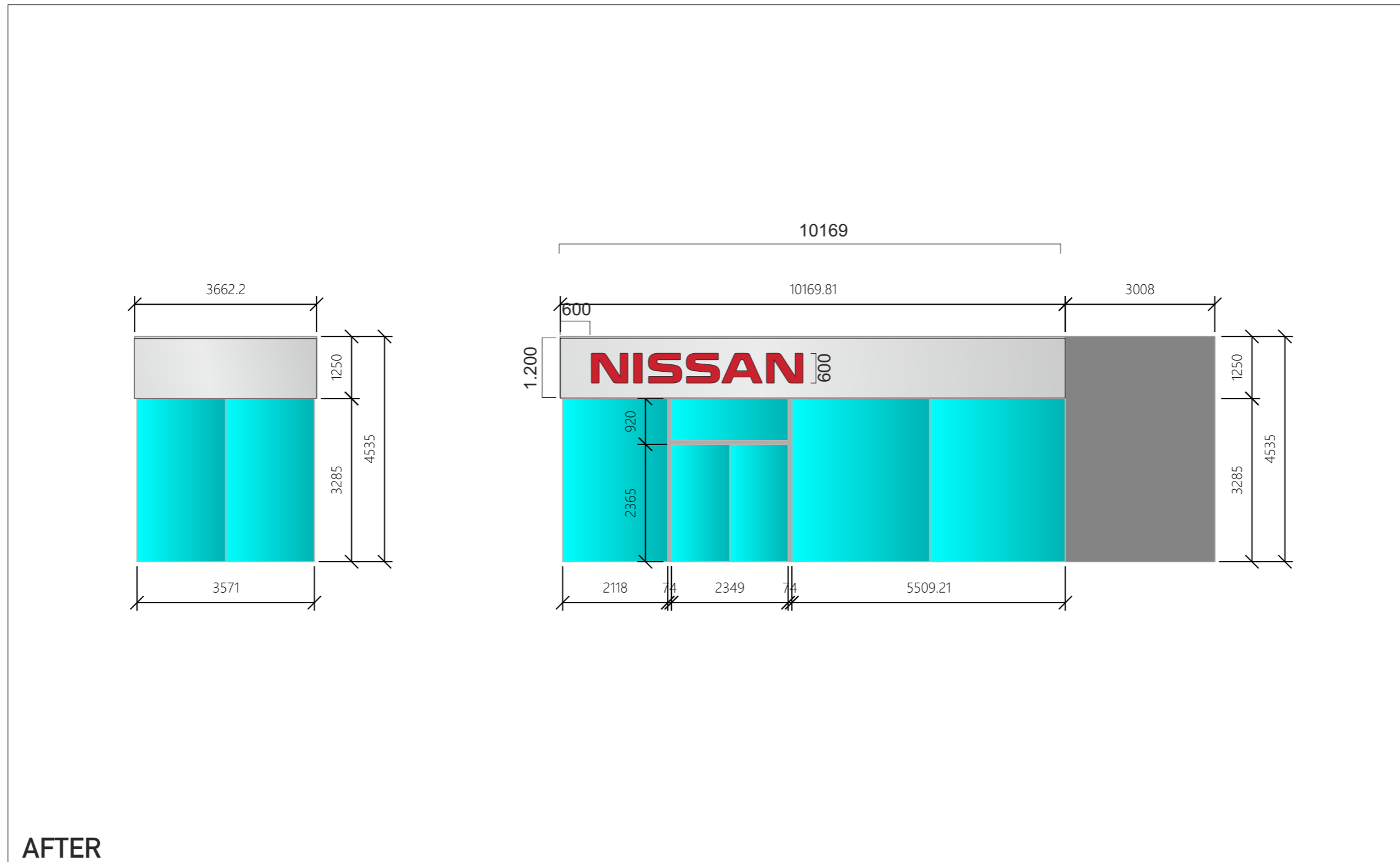
Elevation B

external visual identity



Elevation B

external visual identity



Elevation C

external visual identity



BEFORE



Elevation C

external visual identity



AFTER